



Scott Springfield Mfg. Inc.

Clearly Superior



Inside and Out



ISO 9001 : 2008  
FM 67599



# Intelligent design is our strength



**Customize the colour of your unit at no extra charge**



**Factory mounted controls and interface from AHU to DDC system**



**Our robust construction easily accommodates stacking of units**



**Direct Drive Plenum Fans save energy and eliminate maintenance needed with belt drive fans**



**Multiple fan array application conserves unit length**



**Drains, welded floors, water dams and wash down liner allow the inside to be cleaned with a hose**



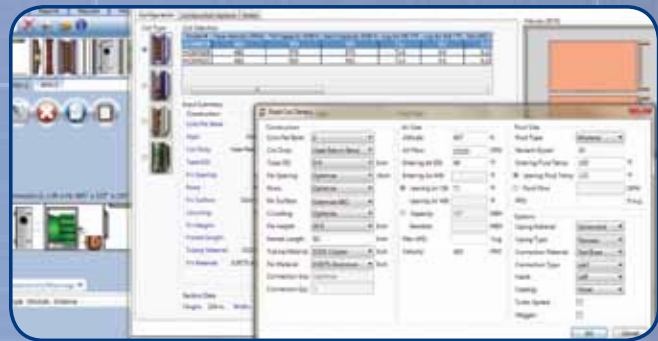
**Structural angle split frame design assures rapid and precise assembly of multiple piece air handlers**



**Fully welded floor seam prevents water or air leakage through the base**

# State of the art S<sup>3</sup> Software

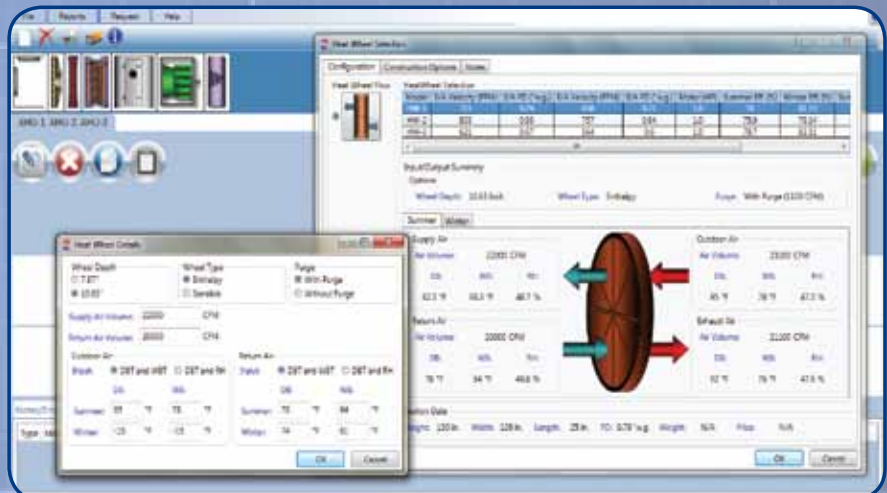
**Puts intelligent design  
in your hands**



**S<sup>3</sup> - Scott Springfield Selector  
custom design software creates:**

- Quotations
- CAD drawings
- Fan curves
- Heat wheel rating
- Unit weights
- Equipment schedules
- Unit specifications
- Project submittals
- Sound ratings
- Coil ratings
- Electrical drawings

**All within 5 minutes per AHU**





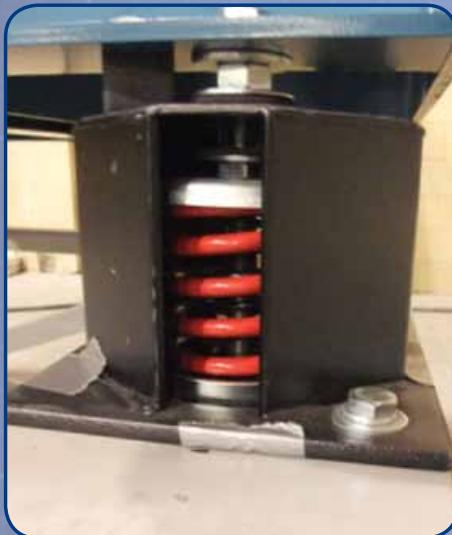
# For Owners



**Wash down Inner liner**



**Multiple fans with full factory controls for redundancy and critical AHU applications**



**Elevated isolator mounting method retains the integrity of the welded floor**



**Water dams and floor drains**



**Every unit is shrink wrapped for delivery to prevent water damage to insulation that could lead to mold and IAQ issues**



**Service vestibules and platforms**

# For Consultants



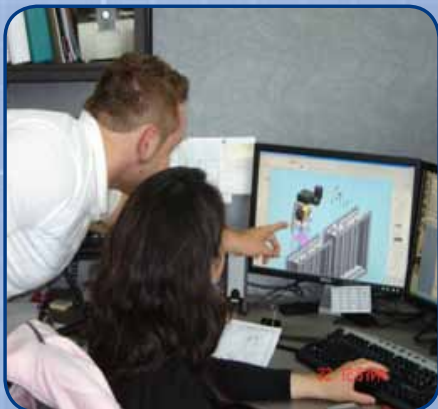
**Seismic certification in  
accordance with IBC releases:  
2000, 2003, 2006, 2009, 2012**

**ISO 9001 : 2008  
FM 67599**

**Our certifications ensure that our AHUs meet safety and quality standards  
set by third parties. Scott Springfield also tests to AMCA and ARI standards**



**Scott Springfield Mfg. Inc. has the  
lowest casing leak rate in the market  
( $< 0.5\%$  at 12 inches w.g. and deflection  
1/300 at 10 inches w.g. pressure)**



**SSM reps offer knowledgeable  
air handler design support**



**SSM offers all fan types  
including multiple fan  
applications**



**Scott Springfield specializes in heat recovery  
applications**



**Explosion proof equipment for  
classified areas**



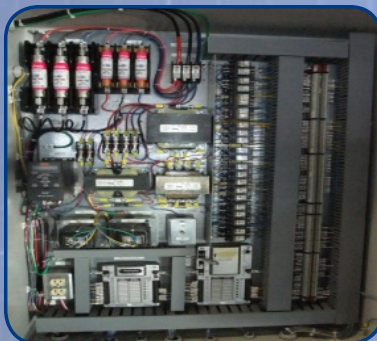
# For Contractors



**Vertical, horizontal, and dual axis structural splits are engineered for easy & time efficient installation**



**Every SSM AHU is shrink wrapped for delivery so it arrives clean, dry and ready to install**



**Optional factory mounted electrical and control components or control conduit ensure easy electrical installation**



**What is submitted is what we deliver**

# For Industrial



**Programmable Logic Controllers by Reliable and Rockwell Automation provide ultimate unit control**



**Clientele include but not limited to:**

- industrial organizations in oil and gas
- pharmaceuticals
- waste water treatment plants
- mining



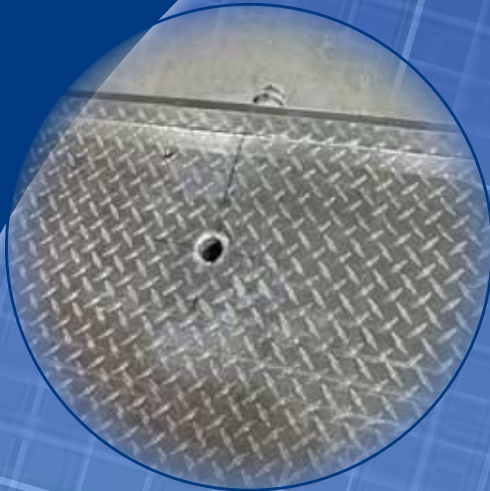
**Custom Direct Expansion with NEMA rated panels**



**ETL listed to Class 1 Div 2**



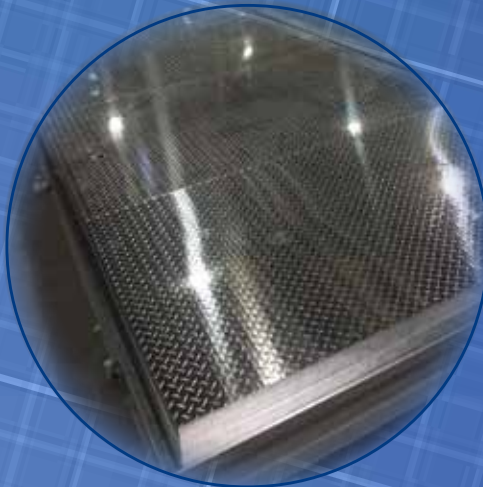
# **Your Air Handler deserves our 5 key standards**



**Water dams and drains keep the insulation dry if there is excess water or if the unit is being washed**



**Casing strength and low leak rate gained by joining panels with clinch technology**



**Fully welded floors maintain constant seal to prevent leakage**



**Structural steel split frame adds strength for shipping/rigging; joining sections is precise and fast**

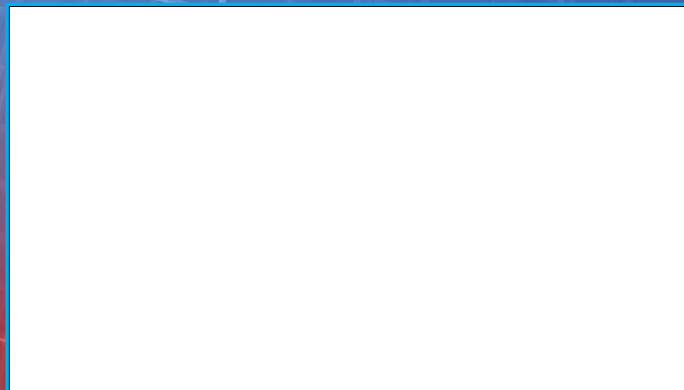


**Double gasket doors contribute to our low leakage rate**



**Scott Springfield Mfg. Inc.**

**Locally represented by:**



**Scott Springfield Mfg. Inc.  
2234 Portland Street S.E.  
Calgary, Alberta, Canada T2G 4M6**

**Ph: (403) 236-1212**

**Fx: (403) 236-9093**